

ELKHALIL



Perfection for Premium wood-based materials

one name supplies it all



A Legacy of

55

Years of

Passion & Expertise
in Building Products

CONTENTS

1.0 The Group **07**

02. The Products **25**

2.1 Panels **27**

2.2 Flooring **53**

2.3 Furniture fittings **65**

2.4 Doors Panels **85**

3.0 Commitment **91**



The Group





El Khalil for Wood Company has established itself as a leading force in the wood industry, known for providing high-quality manufactured wood, laminates, flooring, and accessories in Egypt. With an unwavering dedication to quality and innovation, the company has taken on a pivotal role in numerous construction and design projects, earning a reputation as a trusted and reliable partner in the industry.

ABOUT US

El Khalil for Wood is a leading supplier of top-quality wood-based materials in Egypt. Renowned throughout the market, our extensive presence spans across cities through our robust distribution network. You can encounter our products at exhibitions, residential projects, showrooms, and within your own living spaces. As El Khalil, we specialize in providing premium building materials that imbue spaces with the natural warmth and vitality of wood.





E EGGER

KASTAMONU

GLOSSMAX PRO

MATTPLUS

**ACRYLIC
PANEL**

EVOGLOS



OUR Mission

our mission is to be the Backbone of success for Esteemed furniture and kitchen manufacturers, empowering them to deliver high-quality manufactured products to their discerning customers. El Khalil always keen to provide Continuous support and solutions, ensuring our partners not only meet but exceed the expectations through their Projects in MENA region projects and Domestic modern market. Through a commitment to excellence, innovation, and unwavering support, El Khalil for Wood strives to be the trusted catalyst that elevates the craftsmanship of our clients, leaving a lasting impression of quality and sophistication on every finished piece.

ELKHALIL



OUR VISION

our vision is to be the global benchmark in the wood-Based & Building materials, inspiring innovation and setting new standards for excellence. We aspire to be the preferred partner for furniture and kitchen manufacturers in Egypt & worldwide, recognized not only for the unparalleled quality of our wood-based materials but also for commitment to support our clients in achieving craftsmanship in Mass Production and Customized products. Through continuous expansion, sustainable practices, and fostering enduring partnerships, we envision El Khalil for Wood as the driving force behind the transformation of every creative vision into a masterpiece – where the world's masterpiece wood meets the hands of skilled Designers to craft enduring legacies of beauty and quality.



Our Competitive Advantage

El Khalil boasts the largest stock of wood-based panels in Egypt, all conveniently stored in our warehouses and ready to fulfill your demands promptly. Whether you are a furniture manufacturer, project or interior designer, or a construction professional, El Khalil ensures a seamless supply chain with our extensive inventory, eliminating delays caused by material shortages.

Supporting Manufacturers: Beyond providing raw materials, we aim to support Egyptian manufacturers by offering



access to our warehouses for stock storage. Elkhail stands as a steadfast partner through any situation, demonstrating our unwavering dedication to your success. In essence,

Crisis or prosperity: Elkhail Company goes beyond supplying wood panels; we are committed to building partnerships, fostering growth, and ensuring the success of your projects.

Thank you for choosing ELKHALIL — the heartbeat of Egyptian industries.

Our Milestones

1969 - 1998

Trading Natural Wood

In our formative years, El Khalil for Wood specialized in the trading of natural wood, laying the foundation for our expertise in the industry.

2001-2003

Imported Door Skin & Manufacturing Interior Doors

Taking a step further, El Khalil for Wood ventured into manufacturing doors, importing skin doors to enhance the aesthetic and functional qualities of our product offerings.

1998 - 2001

Importing Massive Wood Doors from Indonesia

Recognizing the global demand for quality doors, we expanded our operations by importing massive wood doors from Indonesia, ensuring our clients had access to premium products

2003

Cooperation with Kastamonu Entegre in Flooring HDF

A strategic partnership with Kastamonu allowed us to diversify into the field of Flooring HDF, offering durable and aesthetically pleasing solutions for our clients.

2016**Entry into Raw MDF Panels**

To meet the evolving needs of the market, Elkhilil for Wood entered the field of Raw MDF panels, further expanding our product range.

2020**Comprehensive Wood-Based Materials and Accessories**

Fuelled by a dedication to offering complete solutions, Elkhilil for Wood has continued to invest in and diversify our portfolio. Today, we stand as a one-stop-shop for manufacturers of furniture and kitchens, offering an extensive range of wood-based materials and accessories.

2015-2020**Melamine Faced MDF & Chipboard**

Responding to the demand for versatile and customizable materials, we introduced Melamine Faced MDF and Chipboard to our portfolio, providing manufacturers with a wide array of design options.

Distribution Channels

El Khalil for Wood is a leading supplier of high-quality wood-based materials in Egypt, boasting a strong reputation within the market. With an extensive network of distributors, we have a ubiquitous presence in various cities through our involvement in exhibitions, residential projects, showrooms, and even directly in customers' homes. Our commitment to providing premium building materials that exude the warmth of nature sets us apart, resulting in a commanding 75% market share in Egypt. We are the primary choice for manufacturers of office furniture seeking top-notch supplies in the country.





Furniture Component We collaborate with prominent national and international furniture manufacturers to cultivate synergies aimed at designing bespoke products that align precisely with the preferences and requirements of their discerning clientele.



Contract With over 55 years of industry expertise, we specialize in assisting large-scale real estate projects by providing tailored furniture components that seamlessly integrate into their overall design scheme. Our proven track record of successfully completing projects aligns with our commitment to delivering exceptional products and services that meet the unique needs of our clients in the real estate sector.



DIY At El Khalil, we take pride in offering a unique service that empowers our customers to create their own custom furniture and fixtures themselves. Our process is simple yet effective:

Custom Panels: We provide panels cut to your exact specifications. Whether it's for cabinets, shelves, or other projects, our precision-cut panels ensure a perfect fit.

Nesting and Doweling: Our experts nest and dowel the panels, optimizing material usage and ensuring structural integrity. This step streamlines the assembly process for you.

Edge Banding: El Khalil's edge banding adds a professional finish to your panels. Say goodbye to rough edges – our high-quality edge banding enhances both aesthetics and durability.

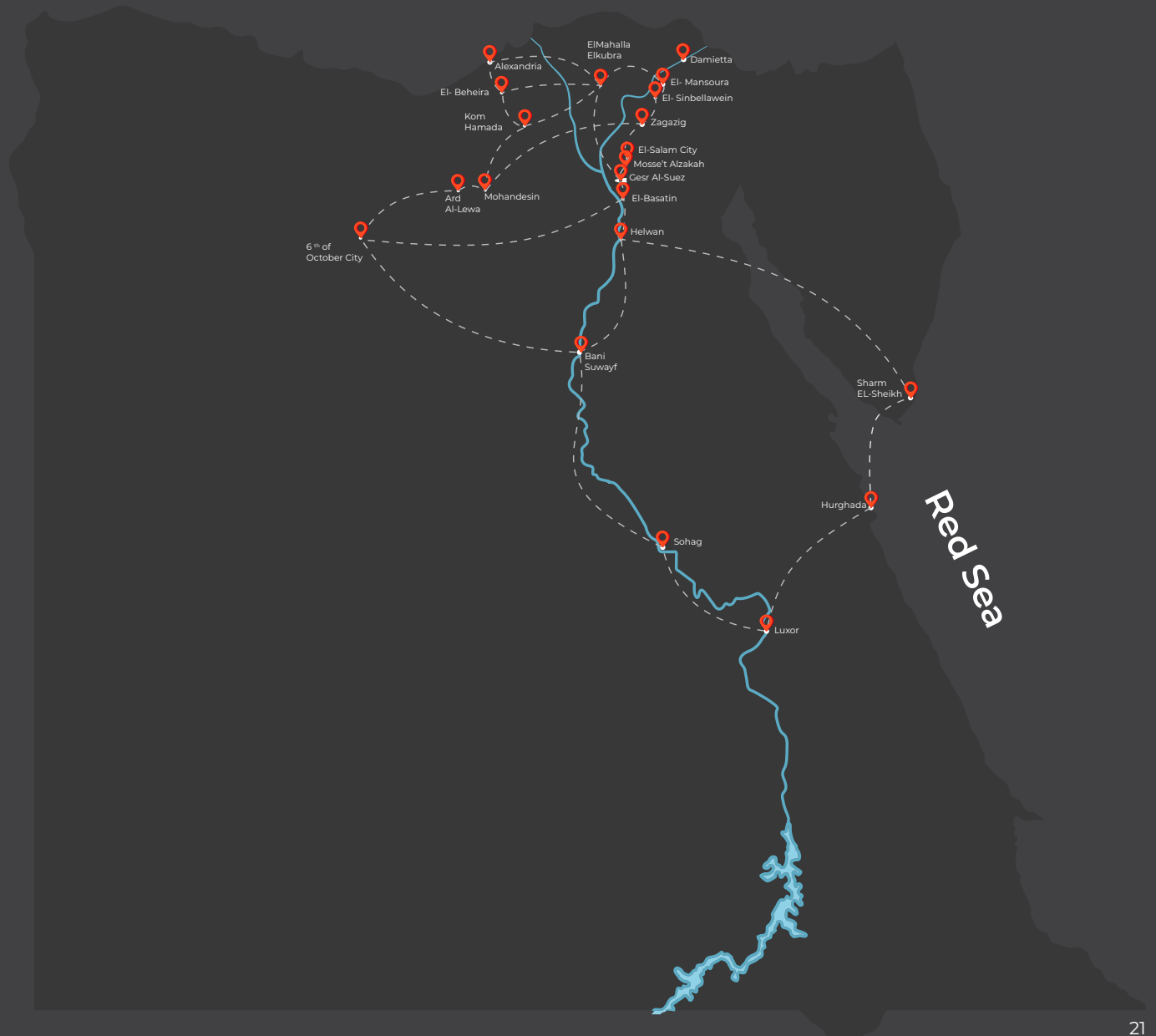
End-User Ready: Once the panels are prepared, we deliver them directly to you. El Khalil's commitment to quality means you receive a solution that's ready for assembly.

Authorized Distributors

Our authorized distributors can be found throughout Egypt, making it convenient for our valued customers to access our products with ease. Whether you are in Cairo, Alexandria, Luxor, or any other city in Egypt, our network of distributors ensures that you can find our products nearby. With a strong presence across the country, our authorized distributors are dedicated to providing exceptional service and support to meet your needs. Visit our website or contact us directly to locate the nearest distributor and discover high-quality products at your doorstep.

- ▶ El-Basatin
- ▶ Helwan
- ▶ Mohandessin
- ▶ Ard Al- Lewa
- ▶ 6th of october
- ▶ El Salam City
- ▶ Mosset El Zakah
- ▶ Gesr Elsuez
- ▶ Alexandria
- ▶ El-Beheira
- ▶ Kom Hamada
- ▶ ElMahalla Elkubra
- ▶ EL- Mansoura
- ▶ Damietta
- ▶ El-Sinbellawein
- ▶ Zagazig
- ▶ Bani Suef
- ▶ Sharm el sheikh
- ▶ Hurghada
- ▶ Sohag
- ▶ Luxor

Mediterranean Sea



Our Esteemed Clients

mobica.

CONTISTAHL
GROUP-

Kitchino[®]
KITCHEN EXPERTS



Hany Saad
Innovations™

HUB FURNITURE

KABBANI
FURNITURE



LA ROCHE
FURNITURE



 **GERMANY**
FURNITURE


pappaloro
FURNITURE


KABNOURY


LIVING IN
— INTERIORS —

CLOSETS
CREATIVE YARD


KABBANI
FURNITURE

MOHM


MOHAMED TALAAT
ARCHITECTS





The Products





2.1 Panels

Wooden panels play a significant role in various industries due to their versatility, durability, and aesthetic appeal. These panels are commonly used in furniture manufacturing, interior design, construction, and other applications where a combination of strength and natural beauty is desired. With different types of wooden panels available, such as plywood, particle board, and medium-density fiberboard (MDF), manufacturers can choose the most suitable material based on specific requirements for strength, flexibility, and finishing options. The use of wooden panels provides a sustainable and eco-friendly solution while offering a wide range of design possibilities to meet the needs of diverse industries.



MDF Boards (medium density fiberboard)



RAW \ Melamine faced MDF

MDF (Medium Density Fiberboard) is a versatile wood fiber material compressed with adhesives, popular for its uniform density, shatter-proof edges, and ease of processing with CNC machines. It is commonly used in various applications like membrane covers, decorative coatings, and door panels, making it a preferred choice for customizable furniture solutions. Melamine faced MDF panels offer over 86 patterns, colors, and material options for furniture and interior decoration, with thickness ranging from 8-30 mm. These panels are suitable for furniture, profiled front panels, shelf panels, wall panels, decorative surfaces, and more, providing both versatility and aesthetic appeal in a range of applications.



Particle Boards (Chipboard)



Raw \ Melamine Faced Chipboard

Particle boards are engineered wood products made by blending wood chips with adhesives, pressing them into solid panels. They are affordable, lightweight, and versatile, commonly used in furniture, cabinets, flooring, and construction. On the other hand, Melamine faced particle boards have a thin layer of melamine resin-impregnated paper applied to the surface of the particle board, providing a durable and decorative finish. This coating makes the boards resistant to scratches, stains, and moisture, making them ideal for use in areas where durability and easy maintenance are essential, like kitchen cabinets and shelves.

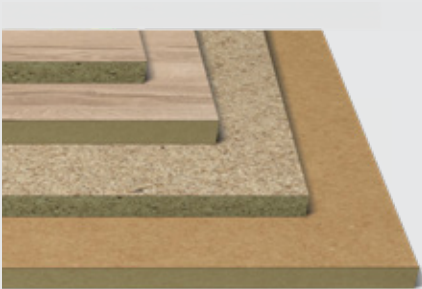


Moisture resistant Boards (MR)



Raw \ Melamine Faced MDF & Chipboard (MR)

A durable MDF \ chipboard also available for Melamine faced MDF \ Chipboard designed for interior decoration, especially in moisture-prone areas. It features a smooth structure allowing for various decorative coatings and has high mechanical strength. Recommended for humid environments, it is suitable for kitchen countertops, bathroom furniture, window sills, floor bases, underfloor cladding, and camping vehicle floors.

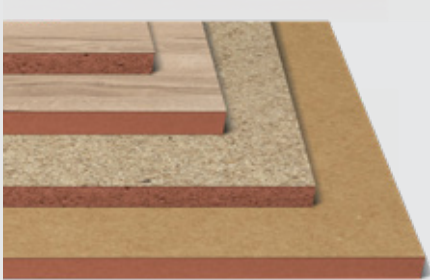




Fire resistant Boards (FR)



Raw \ Melamine Faced MDF & Chipboard (MR)



fire-resistant MDF \ chipboard also available for Melamine faced MDF \ Chipboard that features a red core layer and low ignition value. It is ideal for fire-resistant laminate applications due to its smooth surface and low ignition properties. This versatile material is commonly used in furniture, interior decoration, wall and ceiling coatings, partition walls, doors, flooring, trade show booths, hotel decor, offices, libraries, schools, hospitals, and cinemas.

PRINTPAN



Printpan (MDF)

Melamine faced boards are made by applying melamine to MDF, providing a versatile option for furniture and interior decoration with a variety of patterns and material combinations. They are commonly used for furniture, profiled front panels, shelf panels, wall panels, decorative panels, laminate coating, foil, and in kitchen and office furniture.

EVOGLOSS

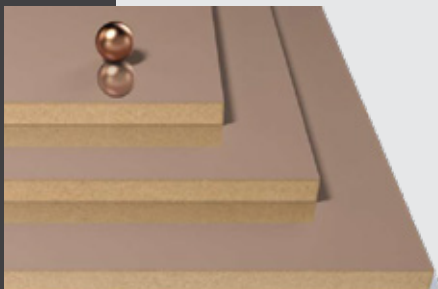
PVC/PET FACED PANEL



PVC /PET Faced Panels

panels coat high-quality MDF with PVC/PET foils, offering over a hundred glossy and matte decor options for creating unique, modern living spaces. These panels are ideal for modern kitchens, bathrooms, home design, furniture, and indoor decorations. They feature modern glossy and matte patterns that are trendy, provide deepness, durability against fading, ease of cleaning, and resistance to scratching and staining.

non scratch ACRYLIC

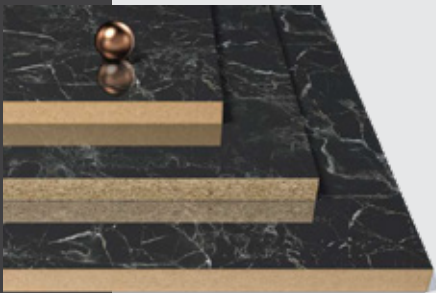


Acrylic Faced Panels (non scratch)

Acrylic panels are made by coating high-quality MDF with scratch-proof AM 1800TopX materials from leading acrylic producer SENOSAN. These panels are suitable for use in offices, kitchens, bathrooms, and cabinets. They offer a deep mirror effect, modern appearance, and high gloss finish, with long-lasting durability against scratching, UV rays, and chemicals. Additionally, they are resistant to cracking, easy to clean, and maintain a smooth surface.

UV Acrylic Lacquered Glossy panel

The high gloss panel is a wooden panel with a decorative glossy surface, created by applying glue and UV acrylic lacquer to melamine faced MDF or Particle Board using advanced technology. It offers high surface quality and impressive glossiness with minimal surface effects thanks to Calender Coating Inert technology. It is suitable for indoor use in areas such as kitchen cabinets, bathrooms, bedrooms, and offices. The panel has high gloss cracking resistance, superior surface quality, scratching resistance, ease of cleaning, resistance to chemicals and stains, and is hygienic.



UV Acrylic Lacquered Matt panel

Extra matt panels are wooden panels with a decorative surface that achieves an ultra-matte finish. This effect is achieved by applying glue and 100% UV acrylic lacquer to the surface of melamine-faced MDF or particle board using advanced technology. The result is a high-quality surface that reflects light evenly, creating a perfect matte appearance. These panels offer a soft-touch feel, high fingerprint resistance, and easy cleaning. They are commonly used in kitchen cabinets, bathroom cabinets, bedrooms, rail cabinets, teen rooms, office furniture, and other modular products.



“Wood is universally beautiful to man. It is the most humanly intimate of all materials.”

Frank Lloyd Wright



Laminates



Laminates are durable surface materials with a decorative outer layer, high-density fiberboard core, and protective backing. They resist scratches, moisture, and heat, making them perfect for countertops, cabinetry, and flooring. Available in a variety of colors and textures, laminates provide endless design options. Easy to clean and maintain, they offer a stylish and long-lasting finish for interior design projects.



HPL Compact



HPL compact, short for High-Pressure Laminate compact, is a durable and versatile material commonly used for surfacing applications. With its high resistance to scratches, impact, moisture, and heat, HPL compact is suitable for both residential and commercial settings. It consists of multiple layers of kraft paper infused with resin and compressed under high pressure to create a solid and sturdy surface. Available in a variety of colors and designs, HPL compact offers a stylish and practical solution for countertops, tabletops, wall panels, and other interior applications. Its easy maintenance and long-lasting properties make it a popular choice for modern design projects.



Edge Banding



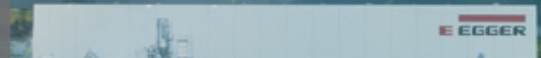
Edge banding is a thin strip of material, typically PVC or wood veneer, applied to the exposed edges of furniture or cabinetry to provide a finished look. It helps to cover and protect the raw edges of materials like particle board or MDF, preventing moisture or damage. Edge banding comes in a variety of colors and finishes to match the surface it is being applied to, creating a seamless appearance. This process not only enhances the aesthetic appeal of furniture but also adds durability and longevity to the piece.





EGGER is a lively, large international family. Behind this description there are 88 nationalities in 22 plants and 18 sales offices worldwide. EGGER, a leading global company in the wood-based materials industry, offers a wide range of high-quality products for furniture and interior design. With a focus on sustainability and innovation, EGGER is committed to producing environmentally friendly materials while meeting the diverse needs of customers worldwide. Their extensive product range includes decorative wood-based panels, laminates, and flooring solutions that are not only aesthetically pleasing but also durable and versatile. By combining traditional craftsmanship with cutting-edge technology, Egger Group sets itself apart as a reliable and innovative partner for architects, designers, and manufacturers looking to create exceptional spaces.

WWW.EGGER.COM



Our Products

▶ Melamine Faced Boards

WIDTH (mm)	LENGTH (mm)	THICKNESS (MM)
2070	2800	8 , 18

▶ Laminates

WIDTH (mm)	LENGTH (mm)	THICKNESS (MM)
1310	2440	0.5
1310	2800	0.5
2060	2790	0.8

▶ Edging

THICKNESS (MM)	WIDTH (mm)
0.8	22





KASTAMONU

Kastamonu Entegre is Turkey's largest wood panel producer and is among the world's leading wood panel producers. Having plants in six different countries, they stand out as a premier player in the wood-based panel industry. They are renowned for their top-notch products and cutting-edge solutions tailored for interior design and furniture purposes. With a keen eye on sustainability and customer contentment, Kastamonu Entegre showcases a wide array of decorative panels, laminates, and MDF offerings that marry aesthetics with eco-consciousness.

Kastamonu Entegre, is employing cutting-edge technology to be the best, and is investing across the globe. Since 1969, they have been pioneers and innovators thanks to their powerful production capabilities, strong sales force, and distribution network. Their unwavering commitment to excellence and ongoing drive for innovation has positioned them as a go-to partner for architects, designers, and manufacturers globally.

WWW.KASTAMONUENTEGRE.COM.TR



Our Products

▶ MDF

WIDTH (mm)	LENGTH (mm)	THICKNESS (MM)
2100	2800	18
2100	2800	8
1830	3660	18
1220	2440	17
1220	2440	18

▶ Chipboard

WIDTH (mm)	LENGTH (mm)	THICKNESS (MM)
2100	2800	18
2100	2800	8
2100	2800	25
1830	3660	18





PRINTPAN

Melamine faced boards, made by applying melamine to MDF, offer a versatile option for furniture and interior decoration.

WIDTH (mm)	LENGTH (mm)	THICKNESS (MM)
1220	2440	4,5,6
2100	2800	4,5,6
1830	3660	18



EVOGLOSS
PVC/PET FACED PANEL

EVOGLOSS panels surfaces are coated with high quality MDF panels with PVC/PET foils having more than a hundred glossy and matte decor options. Evogloss panel options offer you the opportunity to create unique, modern and aesthetic living spaces.

WIDTH (mm)	LENGTH (mm)	THICKNESS (MM)
1220	2800	18

non scratch
ACRYLIC

Acrylic panels are made by coating high-quality MDF with scratch-proof AM 1800TopX materials from leading acrylic producer SENOSAN. They offer a deep mirror effect, modern appearance, and high gloss finish, with long-lasting durability against scratching.

WIDTH (mm)	LENGTH (mm)	THICKNESS (MM)
1220	2800	18





GLOSSMAX PRO high gloss panel is a wooden panel with decorative glossy surface , can be used in Kitchen cabinet, bathroom cabinet, bedroom, rail cabinet, teen room, office furniture and interior decoration

WIDTH (mm)	LENGTH (mm)	THICKNESS (MM)
2100	2800	18



MATTPLUS extra matt panels are wooden panels with decorative extra matt surface , can be used in Kitchen cabinet, bathroom cabinet, bedroom, rail cabinet, teen room, office furniture and interior decoration

WIDTH (mm)	LENGTH (mm)	THICKNESS (MM)
2100	2800	18



CLEAF

CLEAF is an Italian company producing innovative surfaces and solutions for the furniture and interior design industries, faced panels, laminates and edges exclusively manufactured at production sites in Brianza are installed worldwide by architects and companies building inspirational spaces for living and working.

Since 1975 the Caspani family has pursued its entrepreneurial path of tradition and innovation with passion and enthusiasm, since 2013 the creative heart is the CCube, a place devoted to the culture of surfaces. A growing number of textures and decoratives make up an advanced system of products whose value is endorsed by the numerous architects and companies that choose Cleaf to create inspirational spaces for living and working.

More than 60 textures characterised by a 3D structure, obtained by pressing engraved plates for faced panels, release sheets for laminates and mechanical embossing for edges.

WWW.CLEAF.IT

Our Products

▶ Melamine Faced Boards

WIDTH (mm)	LENGTH (mm)	THICKNESS (MM)
2070	2800	18

▶ Edging

THICKNESS (MM)	WIDTH (mm)
1	23





Since 1967, the Merino Group's journey has been marked by continuous evolution and innovation. Initially focusing on plywood, the Group has expanded globally and is now recognized as one of the world's leading manufacturers of decorative laminates and surface solutions. With a strong presence in over 80 countries and an annual turnover exceeding 245 million USD, the Merino Group prioritizes quality, excellence, and ethical business practices. From interior architectural products to information technology and food & agro products, the Group offers a diverse range of high-quality solutions for residential, commercial, and public spaces. Through technological advancements and a commitment to customer satisfaction, the Merino Group has established itself as a pioneer in the industry, consistently delivering innovative products that meet market demands.

WWW.MERINOLAMINATES.COM



Our Products

▶ HPL

WIDTH (mm)	LENGTH (mm)	THICKNESS (MM)
1220	2440	0.5 , 0.6 , 0.7 , 0.8

▶ HPL Compact

WIDTH (mm)	LENGTH (mm)	THICKNESS (MM)
1830	1830	12











2.2 Flooring

Laminate flooring is a popular and versatile flooring option that replicates the look of hardwood, tile, or stone at a more affordable price point. Composed of multiple layers bonded together, laminate flooring is durable, scratch-resistant, and easy to clean, making it a practical choice for high-traffic areas in homes or commercial spaces. Installation is typically straightforward thanks to the click-and-lock system, allowing for a quick and hassle-free update to your space. With a wide range of styles, colors, and textures available, laminate flooring offers a cost-effective way to achieve the look of natural materials without compromising on quality.



Laminate Flooring

Laminate flooring is made by coating high-density boards with materials like decor paper, a protective layer, and balance paper. It's a popular choice for indoor spaces such as offices and houses. Here are some key features:

- ▶ Easy assembly
- ▶ Furniture wheel abrasion resistant
- ▶ Stain-resistant
- ▶ UV ray resistant
- ▶ Point strike resistant
- ▶ Scratch resistant
- ▶ Suitable for underfloor heating
- ▶ Cigarette fire resistant
- ▶ Environmentally friendly base panel
- ▶ Easy to clean and maintain, hygienic





FLOORPAN / ARTFLOOR LAMINATE FLOORING

Laminate flooring is produced by coating both sides of high-density boards (HDF). Materials such as decor paper, protective layer and balance paper are used in their production. They are the preferred choice for indoors (e.g. offices and houses) as a flooring material.

Areas Of Use

- ▶ Indoors
- ▶ Offices and houses

The Advantages of FLOORPAN and ARTFLOOR Laminate Flooring

ELKHALIL

- ▶ FAST AND EASY ASSEMBLY
- ▶ RESISTANT TO SCRATCH
- ▶ SUITABLE FOR UNDERFLOOR HEATING
- ▶ E1 GRADE
- ▶ RESISTANT TO POINT STRIKES
- ▶ RESISTANT TO FURNITURE WHEEL ABRASION
- ▶ ENVIRONMENTALLY FRIENDLY
- ▶ BASE PANEL, HIGH DENSITY FIBERBOARD
- ▶ EASILY CLEANED AND MAINTAINED, HYGIENIC
- ▶ RESISTANT TO CIGARETTE FIRE
- ▶ NOT AFFECTED BY STAINS
- ▶ RESISTANT TO UV RAYS



1- OVERLAY

High quality surface protection resistant to wear and scratch

2- DECOR PAPER

Reflecting the characteristics of the product with a unique design

3- HDF

Strong base panel, resistant to high pressure produced as per E1 norm

4- BALANCE PAPER

Protects against humidity and distortion





EGGER PRO \ BASIC LAMINATE FLOORING

Laminate is a popular flooring choice and universal in application. EGGER laminate flooring is optically very appealing and fully in keeping with new flooring trends .

In addition, our high-quality laminate is particularly durable, universally usable. Our laminate floors Aqua+ and Aqua CLIC it! are even water-resistant. Because the environment is very important to us, in the production of our laminate flooring we only use timber from sustainably managed forests. With EGGER laminate you therefore have flooring that is healthy in the home.

Areas Of Use

- ▶ Indoors
- ▶ Offices and houses

The Advantages of EGGER Laminate Flooring

ELKHALIL

- ▶ Particularly resilient and high-quality laminate
- ▶ High quality for the home thanks to our anti-static technology
- ▶ Laminate with the waterproof installation system Aqua CLIC it! is the water-resistant entry-level product for private spaces
- ▶ Aqua+ laminate is well suited to wet areas due to its anti-swelling protection
- ▶ Natural substances ensure a healthy indoor climate in the home
- ▶ Versatile in all spaces, both residential and commercial
- ▶ Simple laminate installation thanks to our flexible click system
- ▶ Laminate is available in tile, wood and concrete effect with a large selection of decors for every taste and style of living



- 1- Robust, highly abrasion resistant
- 2- Decor image
- 3-HDF swell barrier+ coreboard made from natural wood fibres, optional with Aqua+ core-board
- 4- Balancer





Swiss Krono LAMINATE FLOORING

SWISS KRONO innovative technology ensures flooring with great values to our customers. Our technology is based on high-density fibreboards (HDF 860kg/m³ and 900kg/m³ at Aqua Zero 72h), enhanced by decorative paper and authentic mineral structures that provide long lasting character. With different surface structures, from used look to embossed in register 3D, we offer a wide range of visual options and haptics. From white and grey minimalist scandinavian design, through natural oak tones to chevron designs & concrete optics, our range offers you a possibly to choose want and need.

Areas Of Use

- ▶ Indoors
- ▶ Offices and houses

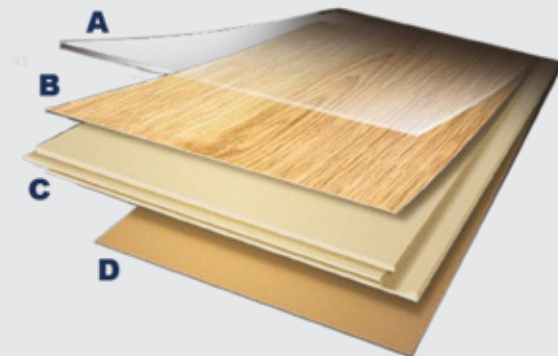
The Advantages of Swiss Krono Laminate Flooring

ELKHALIL

- ▶ **ROBUST:** Impact, shock, and pressure-resistant. Scratch and abrasion-resistant due to its especially hard surface finish.
- ▶ **DURABLE:** concentrated single loads from furniture or other heavy objects will not damage & no pressure marks remain.
- ▶ **HEAT-PROOF:** flame resistant.
- ▶ **LIGHT-FAST:** UV light resistant, will not discolour or fade from direct exposure to sunlight.
- ▶ **NATURAL:** made from 90 per cent wood.
- ▶ **EASY TO INSTALL**
- ▶ **ANTI-ALLERGY:** dust, dander and hair have no place to hide.
- ▶ **CONVEYS HEAT:** suitable for warm water underfloor heating systems.
- ▶ **LONG-LASTING**
- ▶ **INTEGRATED AQUA STOP SYSTEM**
- ▶ **PERFECT FITTING ACCURACY:** thanks to high-tech production, invisible joints guarantee protection against moisture and dirt, an accurate fit and a natural laying pattern.



- A: Wear or overlay layer:
- B: Decorative paper
- C: HDF core or board
- D: Backer Paper











2.3 Furniture Fitting

Furniture fittings play a crucial role in enhancing the functionality and aesthetics of furniture pieces. From hinges and handles to drawer slides and knobs, these components contribute to the overall design and usability of furniture. High-quality fittings not only ensure smooth operation and durability but also add a touch of style and sophistication to any piece. Whether it's for cabinets, wardrobes, or kitchen units, the right fittings can significantly enhance the user experience and make everyday tasks more convenient. With a wide range of materials, finishes, and designs available, furniture fittings offer endless possibilities for customization and personalization to suit various interior styles and preferences.



Our Products



Hinges



Drawers



Drawer Runners



Hettich Group can look back on a successful company history spanning over 125. It is defined by outstanding engineering achievements and bold entrepreneurship. East Westphalia-Lippe has been Hettich home since 1930 – the heart of the German furniture industry. It is here that Hettich produce Technik für Möbel, or technology for furniture: exciting people across the globe with intelligent, innovative furniture fittings. The Hettich Group is entirely family owned. The management reins were passed on to Dr. Andreas Hettich in the fourth generation in 2007.

www.hettich.com



Sliding System



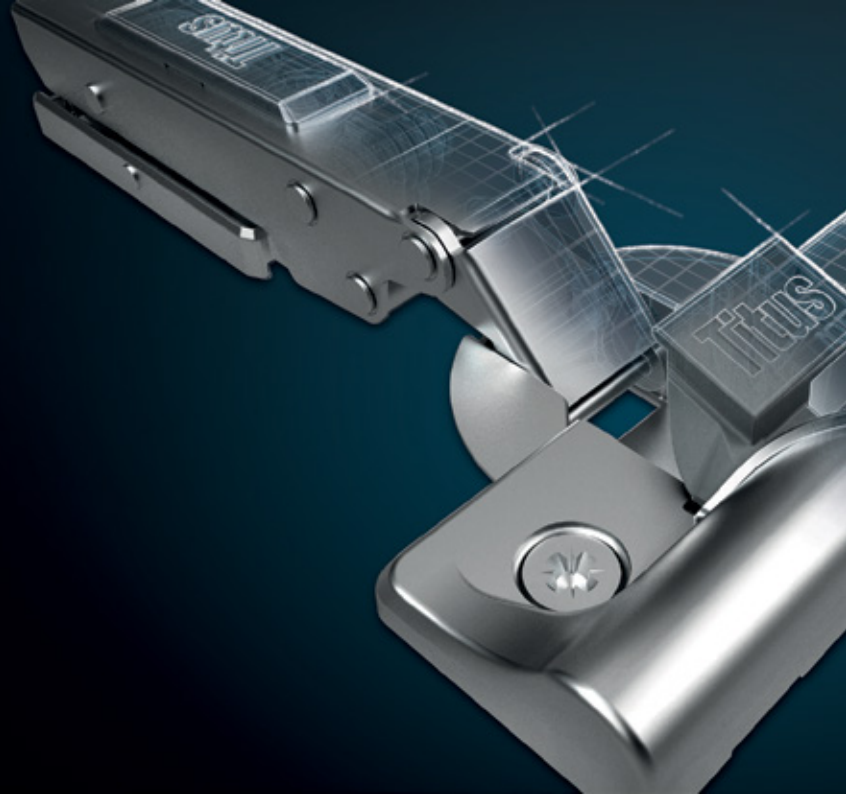
Folding System



Connecting Fittings

Titus+

Our Products



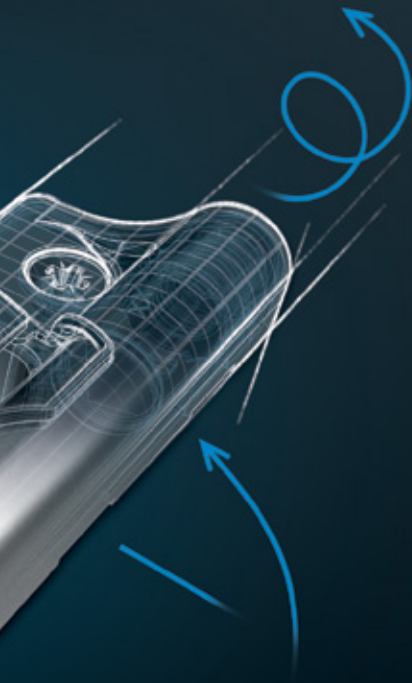
Concealed Hinge



Tekform Slimline Drawer



System Cams & Dowels



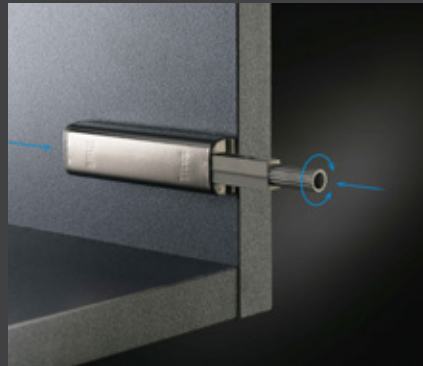
TITUS Group is a mix of companies originating from Titus International in England, Lama Dekani in Slovenia and Tekform Australia. Titus grew from a sole proprietorship distributor of screws established in 1973 into a leading high volume supplier of cabinet connectors for ready-to-assemble furniture.

Titus Group is a company that develops, manufactures, and sells cabinet hardware solutions. It offers cabinet hardware, hydraulic dampers, automated assembly systems, tooling, custom die-cast components, as well as die-casting, ultrasound fastening, and other products

www.titusplus.com



Glissando Soft Closing Systems For Hinges



PushOpen Solutions



TituSoft Closing Systems

Tera Black

TITUS ENHANCED RESISTANCE APPLICATION

Our Products



T-type Hinge



Quickfit TL5



Push Latch



TeraBlack products have a light absorbing microstructure which provides a smooth uniform surface with the velvet feel and a unique black, non reflective, matte finish that makes the object disappear. TeraBlack finish provides exceptional corrosion resistance and consistency throughout the lifecycle of the product.

TeraBlack is more than just another colour option, It is a uniquely durable finish with lasting good looks. It is an engineered solution supported by highly controllable, repeatable and efficient manufacturing process allowing for consistency throughout the lifecycle of the product.

www.titusplus.com

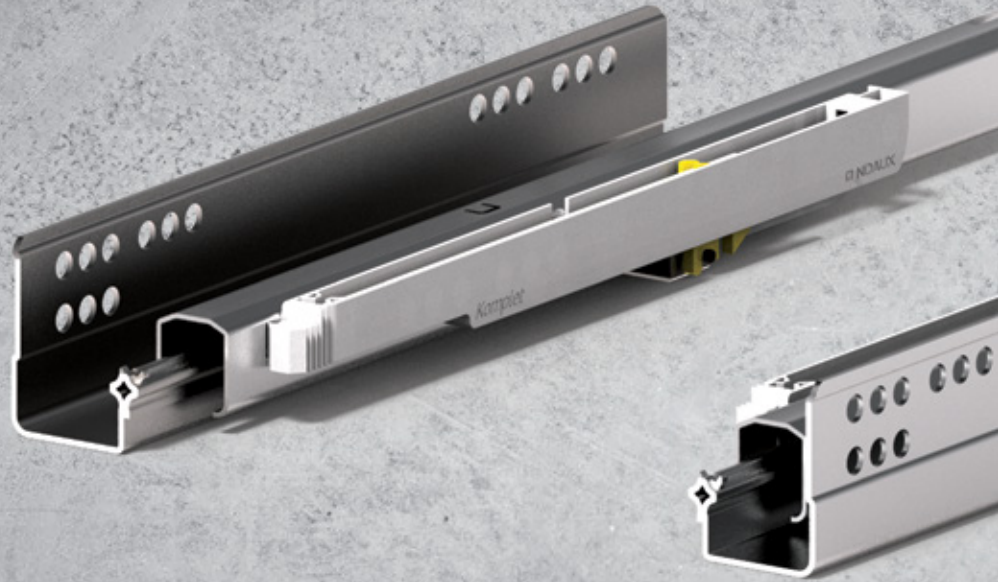


Shelf Support

TeraBlack with highly uniform black matt surface, without any reflections, complements all — standard and trendy — furniture designs in kitchens, bedrooms, living rooms, bathrooms and office.

INDAUX

Our Products



Hinge



Drawers



Drawer Runners



Indaux began as Industrias Auxiliares in Getaria in 1962, working as a small machinery workshop specialising in making furniture components.

More than 60 years have gone by but the almost 250 people working at Indaux are driven by the same idea: offering technological and innovative solutions to the furniture industry with the ultimate aim of improving domestic wellbeing.

Nowadays, INDAUX leads the furniture fitting sector in Spain and has become a benchmark brand internationally, working in more than 70 countries with over 2000 customers all over the world.

This success has come about thanks to the people, companies and organisations that have trusted in this project over the years.

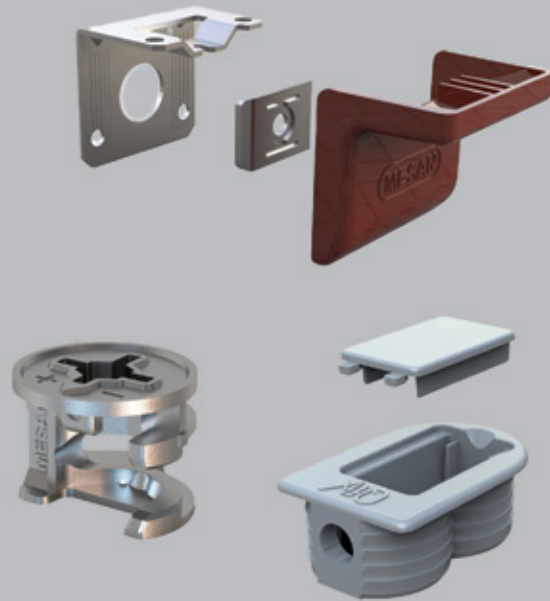
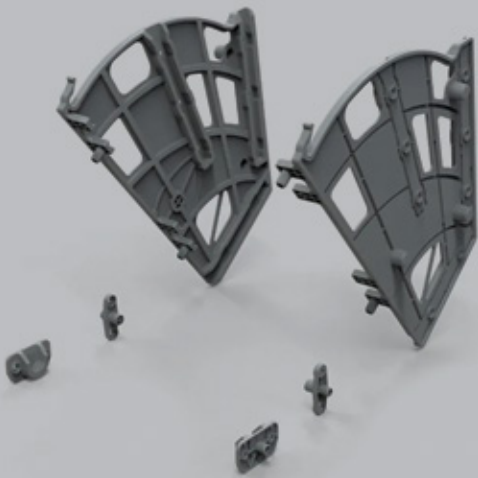
www.indaux.com



Sliding System



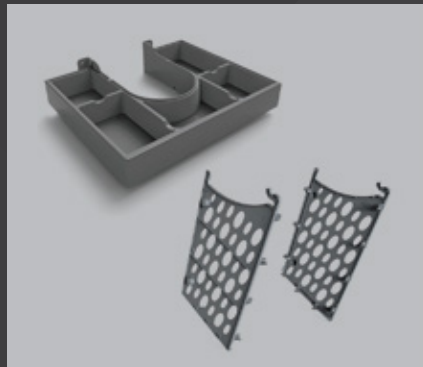
Folding System



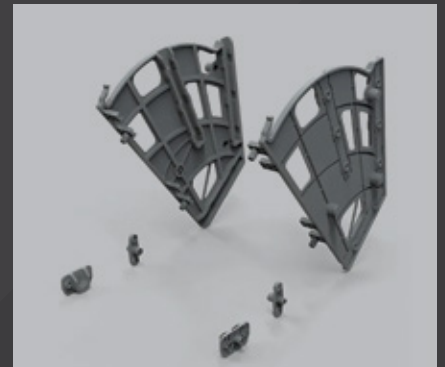
Our Products



Metal & Plastic
Connecting fittings



Kitchen & Bath cabinets
accessories



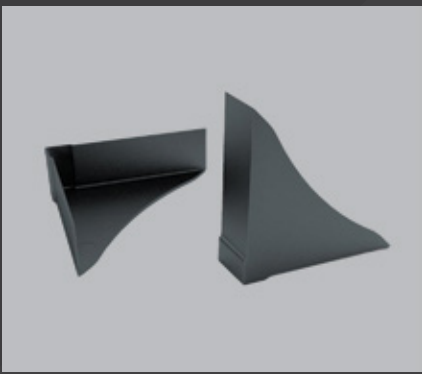
Functional Accessories



Mesan was acquired by Essentra in 2014 and forms part of the Components division. Essentra focuses on the manufacture and distribution of high-volume, essential components, which serve customers in a wide variety of end markets and geographies. Within the components offer, we have over 80,000 products with manufacturing locations worldwide. This web site details our access solutions product range that can be customized to meet your needs.

Our Company have been serving the industries like Electric-Electronic, Telecommunications, Machinery, Transportation, Railway and furniture for more than 44 years. We are developing, high performance, ergonomic, innovative, customer oriented products which is sensitive to environment and human health while complying with the international regulations.

www.mesan.com.tr



Corner Protectors



Our Products



Hinge



Side Runners



Sliding System



Hulk Brand: Elevating Furniture Fittings

Hulk Brand, a division of Elkhailil Company, is a trusted Brand in the furniture industry Accessories. We specialize in selling and distributing high-quality furniture fittings and accessories from European and Asian brands. Our commitment to excellence ensures that our customers receive top-notch products. we believe in the perfect blend of form and function. Join us in creating exceptional spaces with our furniture fittings

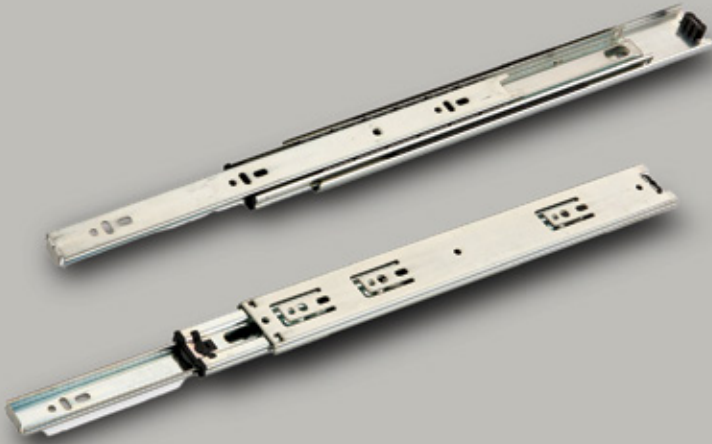


Aluminium Profile



Connectors

Canex One of the leading furniture accessory companies in Turkey, Can Teknik Wooden Accessories Hardware Industry Trade Co. Ltd. Co. was established in 1985 in Istanbul.. Under the Canex brand, they offer over 500 product varieties and have built a reputation for innovation and quality. With production facilities in Besni Organized Industrial Zone, Adiyaman province, the company serves over 1000 customers nationwide. They aim to expand into foreign markets and become an exporter with their focus on continuous improvement and quality management. Canex is known for its modern production approach and is a trusted solution partner in the furniture accessory sector.



canex[®]

Our Products



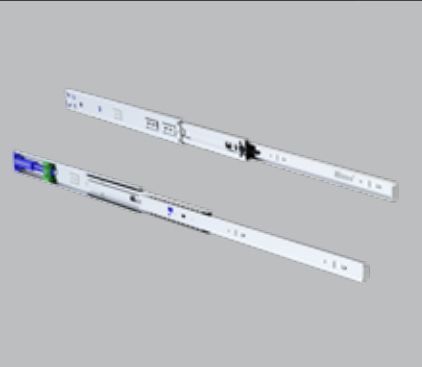
Side Runners

Minnes was established in 1968, Minnes is initially known as Itimat Hardware, served customers in the furniture and construction sector in Turkey until 2005. In response to evolving demands, Aysam import and export company was established in 2006, specializing in panel furniture products sourced from various countries. In 2013, we began domestic production of Telescopic Ball Rail and Brake Ball Rail, expanding our offerings. Celebrating our 50th anniversary in 2018, we added a Fully automatic Alkaline Zinc Coating Facility. By 2021, we have successfully exported our products to 15 countries.



MINNES
TELESKOPİK BİLYALI RAY

Our Products



Side Runners



Beta Kimya Inc. began in 1987 in Istanbul, producing water-based PVAc glues. Over the years, they expanded their operations, establishing multiple factories in Turkey, including a state-of-the-art facility on the Tuzla industrial estate near Istanbul in 2007. By 2016, they had four factories in Istanbul and were recognized as a top exporting company in Turkey, specializing in adhesives and sealants for seven main industries. With a product range of over 100 variants marketed under the brand names MITREAPEL and APEL, they have a strong presence in Turkey, neighboring countries, and are steadily growing in international markets like Western and Eastern Europe, the Middle East, and Africa. Additionally, they have sister companies based in the U.K. and UAE.

Our Products



Fast Adhesive



General Purpose Silicone



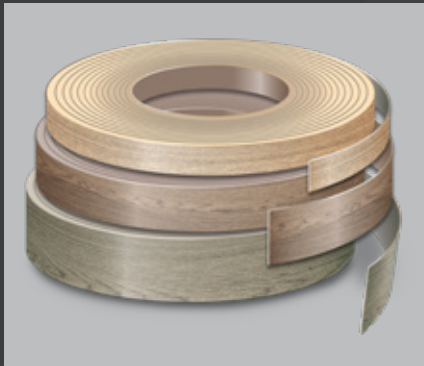
Polyurethane foam



montage kit



Our Products



Furniture & Woodworking
Solutions

Organik Kimya Founded in 1924 as a chemicals trading company, it has evolved over the past 90 years to provide innovative solutions across various markets and applications. With a strong focus on science and customer relationships, organik kemya ventured into polymer emulsions production in 1965. Today, Istanbul plant boasts a 170,000 tpa capacity, while our Rotterdam facility, established in 2007, has an 80,000 tpa capacity. Additionally, our Tuzla plant specializes in hotmelt production for industrial adhesives. organik kemya products cater to diverse industries such as coatings, construction, textiles, pressure-sensitive adhesives, industrial adhesives, and distribution, offering tailored solutions in both hotmelt and waterborne technologies.



Hawa Sliding Solutions is a renowned company specializing in high-quality sliding hardware systems for furniture, architectural applications, and building solutions. With a focus on innovation and design, Hawa has established itself as a leader in the industry. Their products are known for their precision engineering, durability, and aesthetic appeal. By offering a wide range of sliding solutions, Hawa caters to various needs and requirements of customers worldwide. Through their commitment to excellence and customer satisfaction, Hawa continues to set the standard for sliding solutions in the global market.

Our Products



Sliding System



Pocket System



- Shelving unit with various office supplies, including a printer, a scanner, and boxes of paper.
- Printer
- Scanner
- Boxes of paper (A4)
- Shelving unit with various office supplies, including a printer, a scanner, and boxes of paper.
- Printer
- Scanner
- Boxes of paper (A4)











2.4 Doors

Doors are essential components of buildings that provide security, privacy, and access to different rooms and spaces. They come in various materials, styles, and designs to suit different architectural and aesthetic preferences. Common types of doors include solid wood doors, hollow core doors, steel doors, glass doors, and sliding doors. Doors can also feature various hardware such as hinges, locks, handles, and knobs to enhance functionality and security. Whether for interior or exterior use, doors play a crucial role in defining the character and functionality of a space while adding style and personality to a room.



Steel Doors

Steel doors are a popular choice for durable and secure entryways in various settings. They offer a combination of strength, longevity, and visual appeal, with customizable options available through precision engineering and powder coating in different colors. Integrated door frames can also serve as attractive architectural features to enhance interior design.

■ Key advantages of steel doors include:

- ▶ Reduced maintenance costs.
- ▶ Superior resistance to moisture and humidity.
- ▶ High-quality finishes for a polished look.
- ▶ Suitable for both interior and exterior applications.
- ▶ Flexibility to accommodate custom specifications.
- ▶ Ability to apply various coatings for aesthetic enhancement.





STAR Steel Doors

STAR is a leading manufacturer of premium steel doors for high-end residential and commercial customers. we have built a reputation for producing doors of uncompromising quality through our expert manufacturing processes and advanced production capabilities.

Our state of the art production line, designed by industry experts, allows us to achieve outstanding efficiency and quality control. This enables us to deliver high quantities to meet the needs of large projects both within Egypt and for export to other markets.

Areas Of Use

- ▶ Indoors
- ▶ Offices and houses

The Advantages of Steel Doors

Steel doors are a preferred choice for residential, commercial, and other settings that require robust, secure, and long-lasting entry solutions. The versatility of metal materials allows for the creation of visually appealing and structurally advanced door systems. Well-integrated door frames can serve as architectural focal points that enhance the overall interior design. Precision engineering, combined with high-quality powder coating in a range of colors, enables the customization of doors to meet specific requirements.

■ Key advantages of steel doors include:

- ▶ Reduced maintenance costs
- ▶ Superior resistance to moisture and humidity
- ▶ High-quality finishes for a polished look
- ▶ Suitable for both interior and exterior applications
- ▶ Compliance with industry standards and regulations
- ▶ Flexibility to accommodate custom specifications
- ▶ Ability to apply various coatings for aesthetic enhancement
- ▶ Collaboration of steel door frames with wooden, steel, and glass door panels for efficient and easy installation.





Our Commitment



AWARDS & PRIZES

The companies we export from have been consistently recognized and awarded for their innovations and dedication in their work on an international level. These prestigious awards commend their outstanding contributions to their respective industries, showcasing the quality and excellence that they consistently deliver.

► **E EGGER** Awards for product innovation PerfectSense® Feelwood



reddot winner 2021



With this innovation, EGGER takes the natural look and feel of woodbased products to a completely new level. This has already been underpinned by two awards: The PerfectSense Feelwood lacquered boards received the Red Dot Award: Product Design 2021, and was also named “Winner” at the German Innovation Awards 2021.

▶ **Hettich** Red Dot Design Award 2024 for FurnSpin from Hettich



reddot winner 2024
innovative product

Winner of the Red Dot Design Award in the “Innovative Products” category. FurnSpin brings elegant dynamic to high end interior design. With a sweep of the hand, the entire cabinet body can be turned from the closed to the open position.

▶ **CLEAF** Archiproducts Design Award 2020 \ 2021 \ 2022 \ 2023



Winner of the Archiproducts Design Awards for the Surfaces

- ▶ Riga - 2020
- ▶ Fusion - 2021
- ▶ Jiometori - 2022
- ▶ Traccia - 2023

▶ **CLEAF** Adi Design Index Awards 2021



Winner of the Adi Design index for the Surface Fusion 2021, The first of its kind, it's the result of a research path, both technological and aesthetic, which led to the creation of a European patent that defines the production method (EP 2 189 298 A1).



ENVIRONMENTAL SUSTAINABILITY

At our company, we prioritize environmental consciousness and take our sustainability responsibilities very seriously. We are deeply committed to ensuring that all our products and partner companies uphold high standards of sustainability in every aspect of their operations. The responsible use of resources is at the core of our mission, driving us to continually seek state-of-the-art technologies for our products and to consistently improve our processes. By championing environmentally-friendly practices and advocating for the preservation of our planet, we strive to make a positive impact on both our community and the world at large.



Das Zeichen für verantwortungsvolle Waldwirtschaft



Förderung nachhaltiger Waldwirtschaft
www.pefc.at





HYGIENE

Viruses and harmful bacteria pose ongoing challenges to public health in various settings. Our company places a strong emphasis on hygiene and safety by selectively sourcing products, such as panels and flooring, from reputable suppliers who have obtained all relevant certifications. Through a rigorous vetting process based on these certificates, we ensure that our products offer a hygienic and virus-resistant solution, ultimately contributing to the creation of healthier and safer environments for our customers.



Certificate for
Perfectsense

CONTACT US

Head Office

Alkattameya industrial zone , Area No.25 , Maadi Sokhna
Road behind Petrogas, Cairo , Egypt.

010 0057 8441 / 010 2609 8882 / 0101788 8806

sales@elkhalil-wood.com

© 2024 El Khalil wood . All right reserved



www.elkhalil-wood.com